

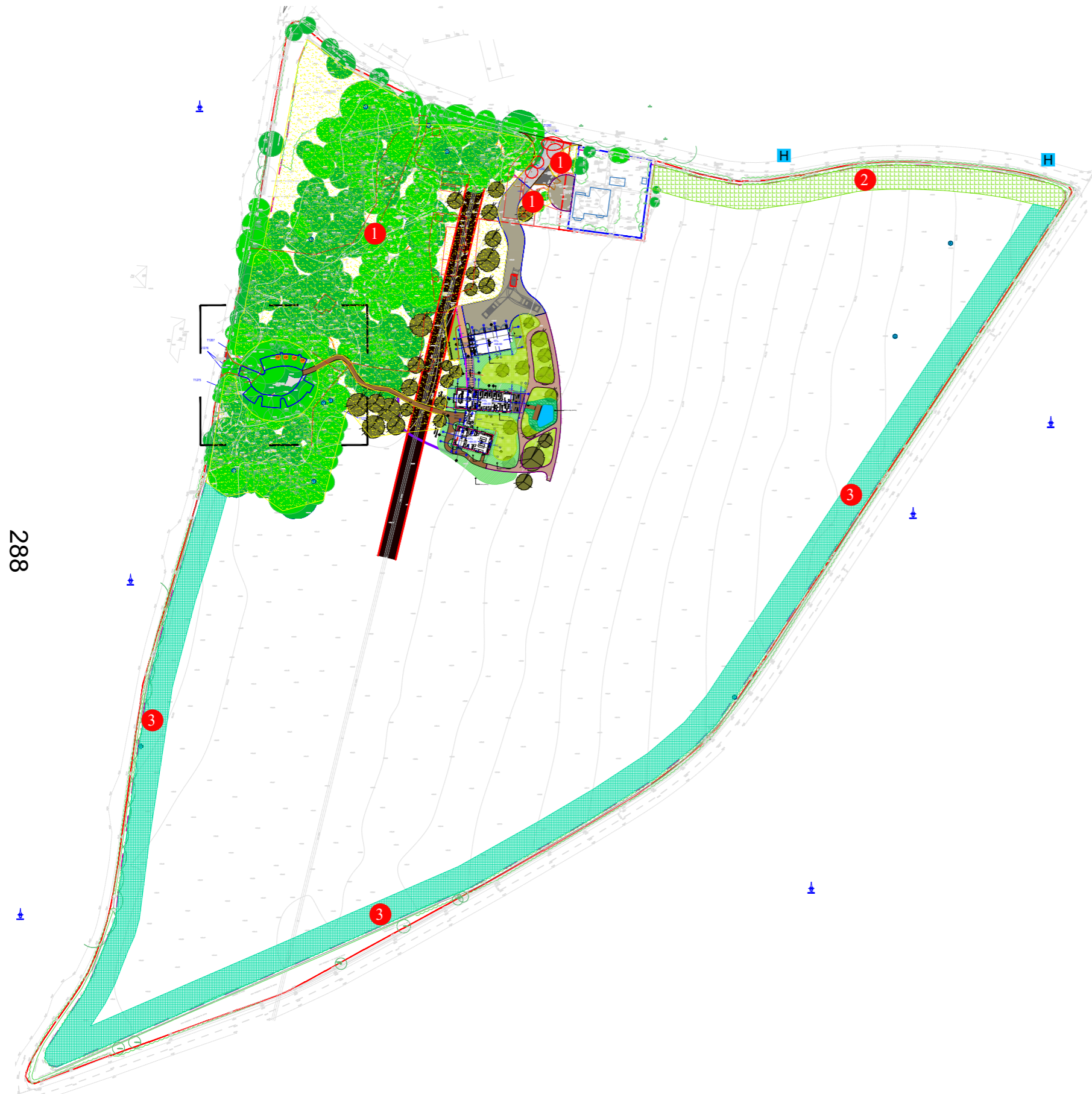
**BARTLETT ARBORETUM, WHITE HOUSE FARM,
READING**

LANDSCAPE PROPOSAL

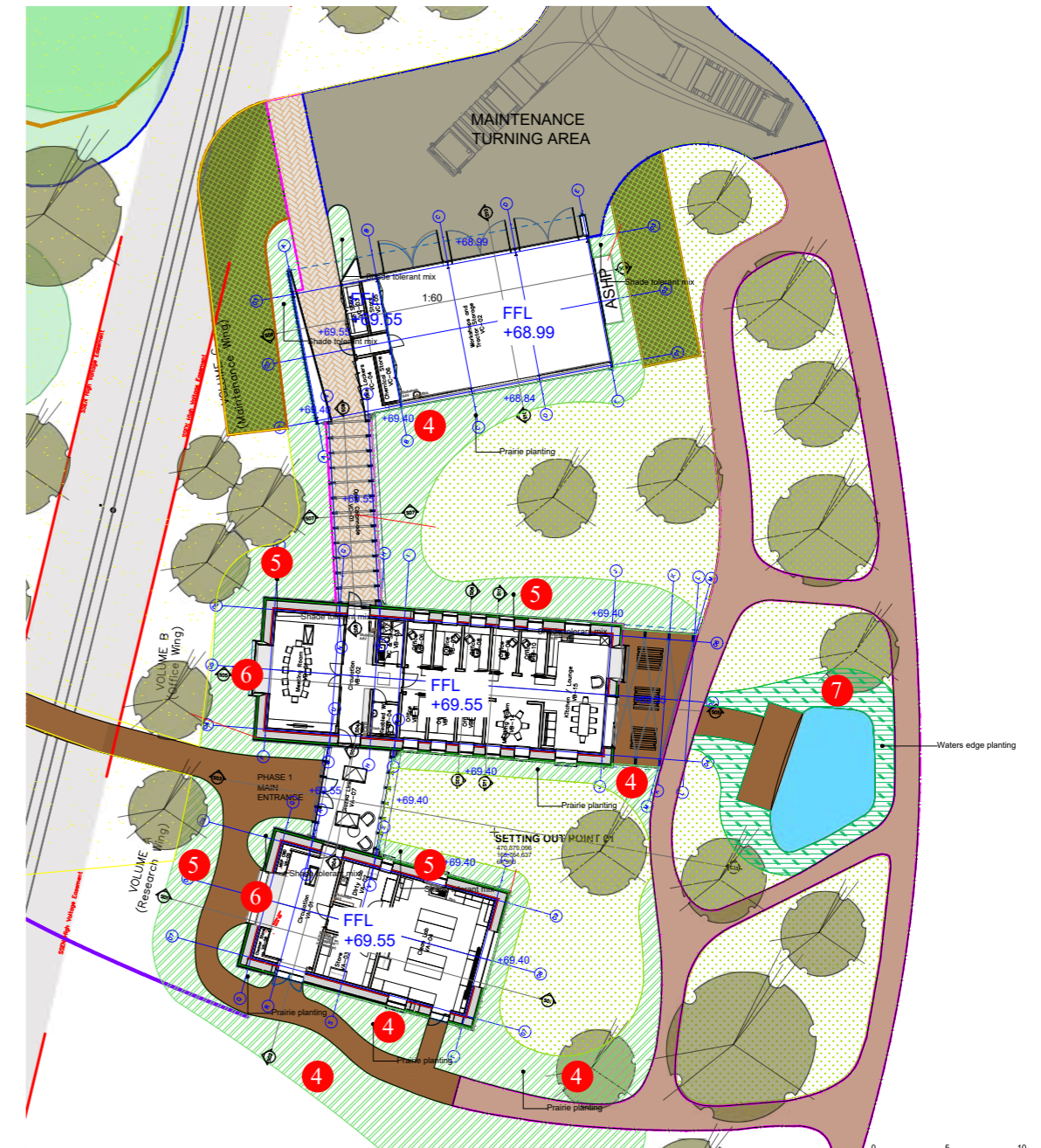
PLANTING STRATEGY

FEB 2024

Landscape Plan



288



1. Enhancement to existing woodland - NW corner of the site

Increase the layers of planting - currently only tree canopy. Introduce further diversity of species - Ilex, Taxus, Spindle and Hazel, plant as whips in area where woodland is less dense, to create a mid layer. Further enhance with understory layer, adding a woodland mix and bulbs.



2. Northern Boundary Planting - Coniferous Trees



- Wollemia nobilis
- Tsuga heterophylla
- Prumnopitys andina
- Taxodium distichum
- Metasequoia glyptostroboides
- Picea orientalis
- Sequoiadendron giganteum
- Ginkgo biloba
- Sciadopitys verticillata
- Pinus sylvestris
- Pinus coulteri
- Cryptomeria japonica
- Abies grandis

NB Additional coniferous species could also be included based on availability of stock when planting

290

3. Other Boundary Planting - SE and Western edge



- Quercus frainetto
 - Fagus orientalis
 - Liriodendron tulipifera
 - Pterocarya fraxinolia
 - Styphnolobium japonicum
 - Toona sinensis
 - Aesculus indica
 - Aesculus glabra
 - Eucommia ulmoides
 - Acer opalus
 - Acer x zoeschense
 - Quercus bimundorum
 - Celtis occidentalis
 - Nothofagus menziesii
 - Acer griseum
 - Zelkova carpinifolia
 - Magnolia grandiflora
 - Maclura pomifera
 - Aesulus californica
 - Quercus ellipsoidalis
 - Quercus vellutina
 - Quercus castaneifolia
 - Quercus cerris
 - Tilia tomentosa
 - Magnolia acuminata
 - Tilia cordata
 - Tilia chenmoui
 - Quercus coccinea
 - Magnolia acuminata 'Seiju'
 - Magnolia acuminata 'Blue Opal'
- NB Additional species could also be included based on availability of stock when planting

4. Prairie planting - Planting adjacent to the new building

Grasses



Calamagrostis acutiflora 'Karl Foerster'
Deschampsia cespitosa
Hakonechloa macra 'Aureola'
Miscanthus sinensis 'Gracillimus'
Miscanthus sinensis 'Silberfeder'
Molinia caerulea
Pennisetum alopecuroides
Stipa tenuissima
Stipa gigantea

Herbaceous



Allium
Anthriscus sylvestris 'Ravenswing'
Angelica gigas
Aster sp
Cenolophium denudatum
Chaerophyllum hirsutum
Echinacea purpurea
Echinops ritro 'Veitch's Blue'
Iris sibirica
Helenium 'Moerheim Beauty'
Helianthus
Hemerocallis
Knautia macedonica
Monarda 'Marshall's Delight'
Perovskia atriplicifolia 'Blue Spire'
Phlomis fruticosa
Rudbeckia fulgida 'Goldsturm'
Salvia x sylvestris
Stachys officinalis 'Hummelo'
Solidago rugosa 'Fireworks'
Verbascum epixanthinum

5. Shade tolerant mix - Planting adjacent to the new building

Shrubs



- Amelanchier canadensis
- Cornus alba 'Kesselringii'
- Cornus sanguinea 'Mid Winter Fire'
- Cornus sericea 'Flaviramea'
- Osmanthus burkwoodii
- Skimmia confusa 'Kew Green'
- Skimmia japonica
- Skimmia japonica 'Fructu-albo'
- Skimmia japonica 'Rubella'
- Viburnum davidii

Herbaceous



- Alchemilla mollis
- Astilbe 'Fanal'
- Astilbe 'Venus'
- Athyrium filix-femina
- Digitalis purpurea
- Dryopteris filix-mas
- Helleborus argutifolius
- Helleborus niger
- Helleborus orientalis
- Hemerocallis 'Corky'
- Hemerocallis 'Stafford'
- Hemerocallis 'Stella de Oro'
- Heuchera micrantha 'Palace Purple'
- Liriope muscari
- Polystichum setiferum

6. Climbers - located against the western facade of new buildings



7. Pond - located in area close to new buildings



Plant Schedule

Stock	Quantity	Item	Size	Height (cm)	Notes	Density ²
1. ENHANCEMENT TO EXISTING WOODLAND - 13843m² - 1 plant per 5m² - total 2769plants						
	692	Corylus avellana			Whip	
	692	Euonymus europaeus			Whip	
	692	Ilex aquifolium			Whip	
	692	Taxus baccata			Whip	
	2768					
Wildflower meadow mix - 10% of area (1384m²)						
	Counted	Pictorial Meadows Woodland Edge or equivalent at 2g/m ²				Counted
Bulbs planted in swathes over 10% of area (1384m²) 15 bulbs per m²						
	4152	Anemone nemorosa				15m ²
	4152	Crocus tommasinianus				15m ²
	4152	Cyclamen hederifolium				15m ²
	4152	Galanthus nivalis				15m ²
	4152	Hyacinthoides non-scripta				15m ²
	20760					
2. NORTHERN BOUNDARY TREES - conifers planted at 7.5 -15m centres over 1714m² - 152 trees						
	12	Wollemia nobilis				Counted
	11	Tsuga heterophylla				Counted
	11	Prumnopitys andina				Counted
	12	Taxodium distichum				Counted
	12	Metasequoia glyptostroboides				Counted
	11	Picea orientalis				Counted
	12	Sequoiadendron giganteum				Counted
	12	Ginkgo biloba				Counted
	11	Sciadopitys verticillata				Counted
	12	Pinus sylvestris				Counted
	12	Pinus coulteri				Counted
	12	Cryptomeria japonica				Counted
	12	Abies grandis				Counted
	152					
N.B. Additional species can also be included, ideally larger specimens will be planted to give a mature feel but sizes will vary based on availability						
3. OTHER BOUNDARY TREES -SE and western planted at 7.5 - 15m centres over 8040m² - 715 trees						
	24	Quercus frainetto				Counted
	24	Fagus orientalis				Counted
	24	Liriodendron tulipifera				Counted
	24	Pterocarya fraxinolia				Counted
	24	Styphnolobium japonicum				Counted
	24	Toona sinensis				Counted
	24	Aesculus indica				Counted
	24	Aesculus glabra				Counted
	24	Eucommia ulmoides				Counted
	24	Acer opalus				Counted
	24	Acer x zoeschense				Counted
	24	Quercus bimundorum				Counted
	24	Celtis occidentalis				Counted
	24	Nothofagus menziesii				Counted
	24	Acer griseum				Counted
	24	Zelkova carpinifolia				Counted
	24	Magnolia grandiflora				Counted
	24	Maclura pomifera				Counted
	24	Aesulus californica				Counted
	24	Quercus ellipsoidalis				Counted
	24	Quercus vellutina				Counted
	24	Quercus castaneifolia				Counted
	24	Quercus cerris				Counted
	24	Tilia tomentosa				Counted
	24	Magnolia acuminata				Counted
	23	Tilia cordata				Counted
	23	Tilia chenmoui				Counted
	23	Quercus coccinea				Counted
	23	Magnolia acuminata 'Seiju'				Counted
	23	Magnolia acuminata 'Blue Opal'				Counted
	715					
N.B. Additional species can also be included, ideally larger specimens will be planted to give a mature feel but sizes will vary based on availability						

4. PRAIRIE PLANTING - 378m² - half herbaceous (945 plants) and half grasses at 5m² (945 plants)						
Herbaceous						
	45	Allium	2L			C 5m ²
	45	Anthriscus syvestris 'Ravenswing'	2L			C 5m ²
	45	Angelica gigas	2L			C 5m ²
	45	Aster sp	2L			C 5m ²
	45	Cenolophium denudatum	2L			C 5m ²
	45	Chaerophyllum hirsutum	2L			C 5m ²
	45	Echinacea purpurea	2L			C 5m ²
	45	Echinops ritro 'Veitch's Blue'	2L			C 5m ²
	45	Iris sibirica	2L			C 5m ²
	45	Helenium 'Moerheim Beauty'	2L			C 5m ²
	45	Helianthus	2L			C 5m ²
	45	Hemerocallis	2L			C 5m ²
	45	Knautia macedonica	2L			C 5m ²
	45	Monarda 'Marshalls Delight'	2L			C 5m ²
	45	Perovskia atriplicifolia 'Blue Spire'	2L			C 5m ²
	45	Phlomis fruticosa	2L			C 5m ²
	45	Rudbeckia fulgida 'Goldsturm'	2L			C 5m ²
	45	Salvia x sylvestris	2L			C 5m ²
	45	Stachys officinalis 'Hummelo'	2L			C 5m ²
	45	Solidago rugosa 'Fireworks'	2L			C 5m ²
	45	Verbascum epixanthinum	2L			C 5m ²
	945					
Grasses						
	105	Calamagrostis acutiflora 'Karl Foerster'	2L			C 5m ²
	105	Deschampsia cespitosa	2L			C 5m ²
	105	Hakonechloa macra 'Aureola'	2L			C 5m ²
	105	Miscanthus sinensis 'Gracillimus'	2L			C 5m ²
	105	Miscanthus sinensis 'Silberfeder'	2L			C 5m ²
	105	Molinia caerulea	2L			C 5m ²
	105	Pennisetum alopecuroides	2L			C 5m ²
	105	Stipa tenuissima	2L			C 5m ²
	105	Stipa gigantean	2L			C 5m ²
	945					
5. SHADE TOLERANT MIX - 187m² - half shrubs at 3m² (281 plants) and half herbaceous at 5m² (468 plants)						
Shrubs						
	29	Amelanchier canadensis	3L			C 3m ²
	28	Cornus alba 'Kesselringii'	3L	20-30	Bushy, min. 4 breaks	C 3m ²
	28	Cornus sanguinea 'Mid Winter Fire'	3L			C 3m ²
	28	Cornus sericea 'Flaviramea'	3L	40-60	Branched, min. 2 break	C 3m ²
	28	Osmanthus burkwoodii	3L	30-40		C 3m ²
	28	Skimmia confusa 'Kew Green'	3L	20-30	Bushy, min. 3 breaks	C 3m ²
	28	Skimmia japonica	3L	20-30	Bushy, min. 3 breaks	C 3m ²
	28	Skimmia japonica 'Fructu-albo'	3L	20-30	Bushy, min. 3 breaks	C 3m ²
	28	Skimmia japonica 'Rubella'	3L	20-30	Bushy, min. 3 breaks	C 3m ²
	28	Viburnum davidii	3L	20-30	Bushy, min. 2 breaks	C 3m ²
	281					
Herbaceous						
	31	Alchemilla mollis	2L			C 5m ²
	31	Astilbe 'Fana'	2L			C 5m ²
	31	Astilbe 'Venus'	2L			C 5m ²
	31	Athyrium filix-femina	2L			C 5m ²
	31	Digitalis purpurea	2L			C 5m ²
	31	Dryopteris filix-mas	2L			C 5m ²
	31	Helleborus argutifolius	2L			C 5m ²
	31	Helleborus niger	2L			C 5m ²
	31	Helleborus orientalis	2L			C 5m ²
	31	Hemerocallis 'Corky'	2L			C 5m ²
	31	Hemerocallis 'Stafford'	2L			C 5m ²
	31	Hemerocallis 'Stella de Oro'	2L			C 5m ²
	34	Heuchera micrantha 'Palace Purple'	2L			C 5m ²
	31	Liriope muscari	2L			C 5m ²
	31	Polystichum setiferum	2L			C 5m ²
	468					
6. CLIMBERS - located against the western façade of new buildings						
	8	Clematis montana				
	8	Lonicera periclymenum 'Serotina'				
	8	Trachelospermum jasminoides				
	24					
7. POND - 66m²						
	Counted	Pictorial Meadows Waters Edge Mix or equivalent				Counted

98